



Elton Facade

As Displayed at Homeworld Marsden Park

 4
  2.5
  2

Suitable for 10m frontage

House Size 8.8m x 20.93m

Ground Floor 116.83 m²

First Floor 106.66 m²

Garage 34.24 m²

Porch 4.67 m²

Balcony 6.86 m²

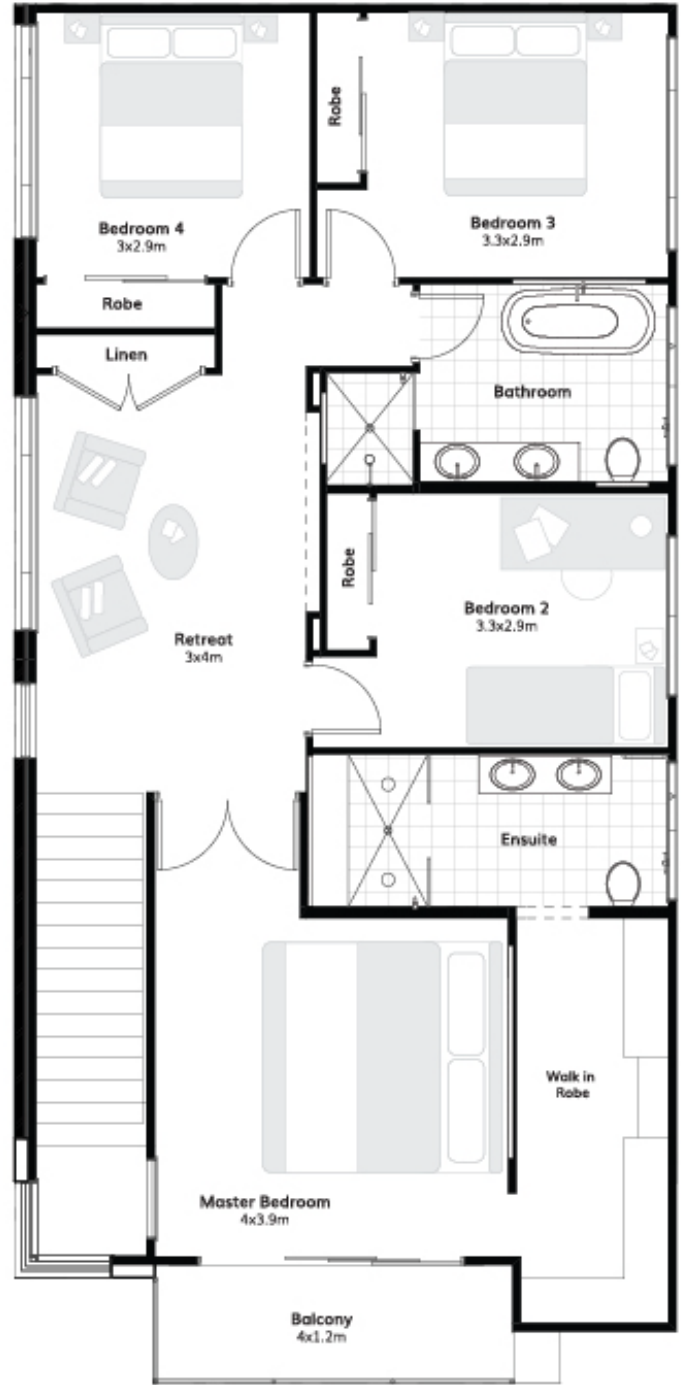
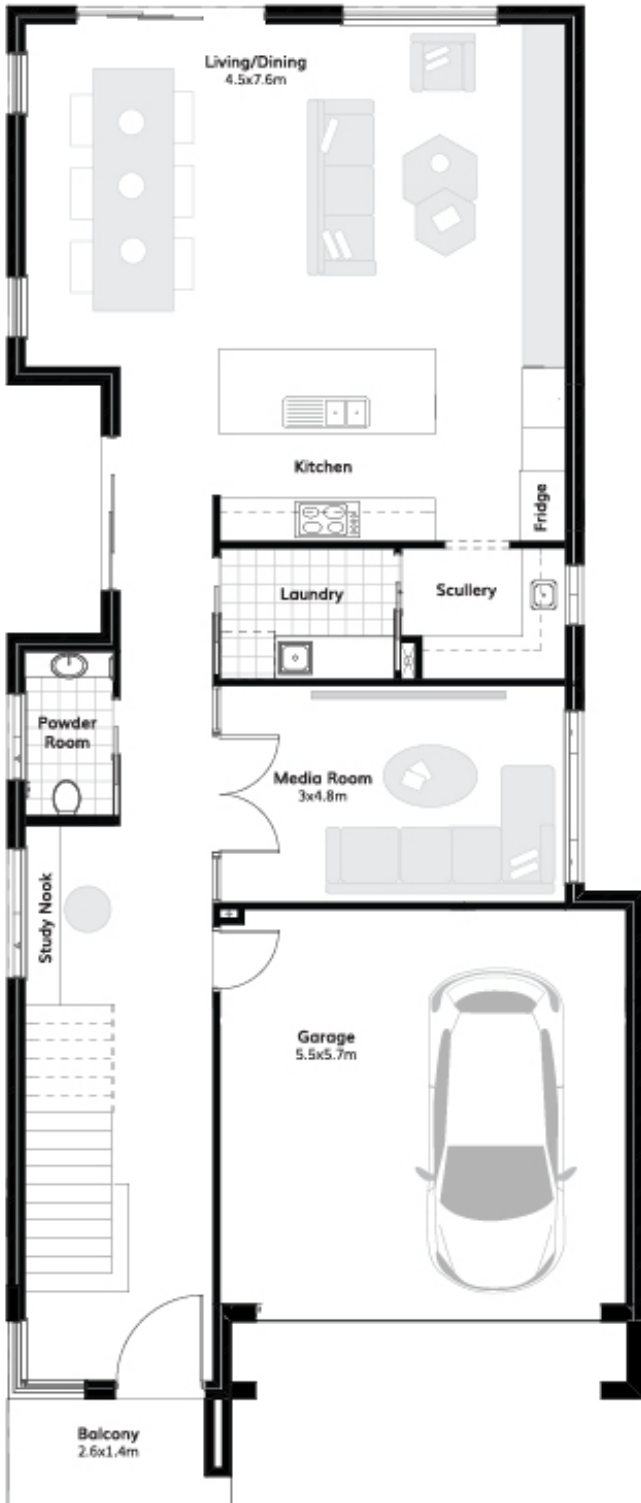
Total 296.26 m²

**I can be customised to suit your needs,
talk to your sales consultant today!**

meridianhomes.com.au

1300 855 138





Your new home can be customised to feature these facades

