

A detailed botanical illustration of a tropical plant with large, dark green, ribbed leaves and a cluster of bright red and yellow flowers. The plant is positioned on the left side of the frame, extending towards the center.

# Summer Series

A dark green circular callout containing white text, positioned to the right of the main red circle.

Only  
\$6990

## *essential*

Perfect for Everyone



MERIDIAN HOMES

Summer Series



# essential

Our essential collection of inclusions has been curated by our design team to include the 9 key items you need to finish your new home. This guide will show you what's included, all for only \$6990.



Disclaimer: All images are used for Marketing purposes only and may not be indicative of final product. Please note the published price is based on the inclusions set out in the specifications attached to this Brochure. Speak to one of our consultants at the display home or call 1300 855 138 if the specification is missing or if you require further clarification.



2600mm ceiling to ground floor.

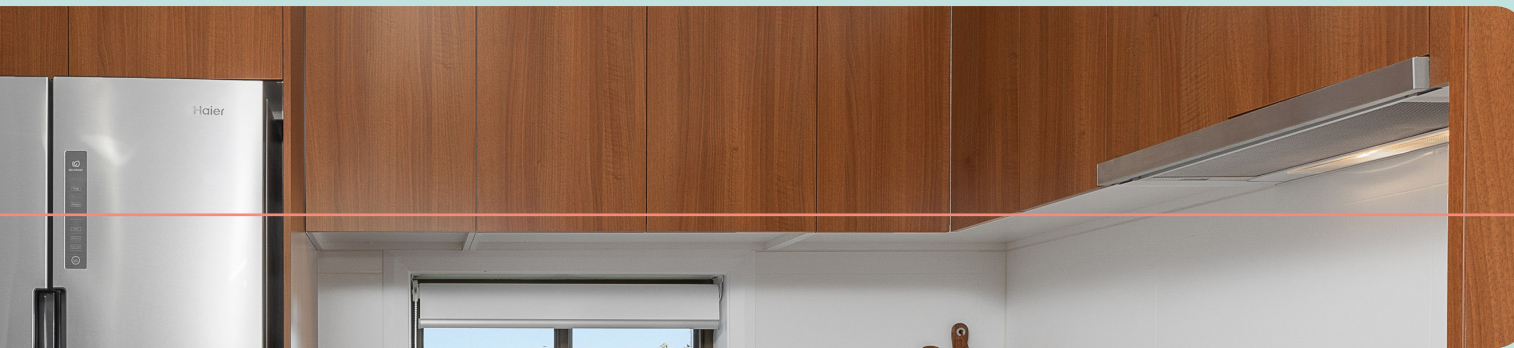


2kW Solar panel System



*900mm gas Westinghouse cooktop*

*And as standard with Meridian Homes,  
your path and driveway is included in your new home.*



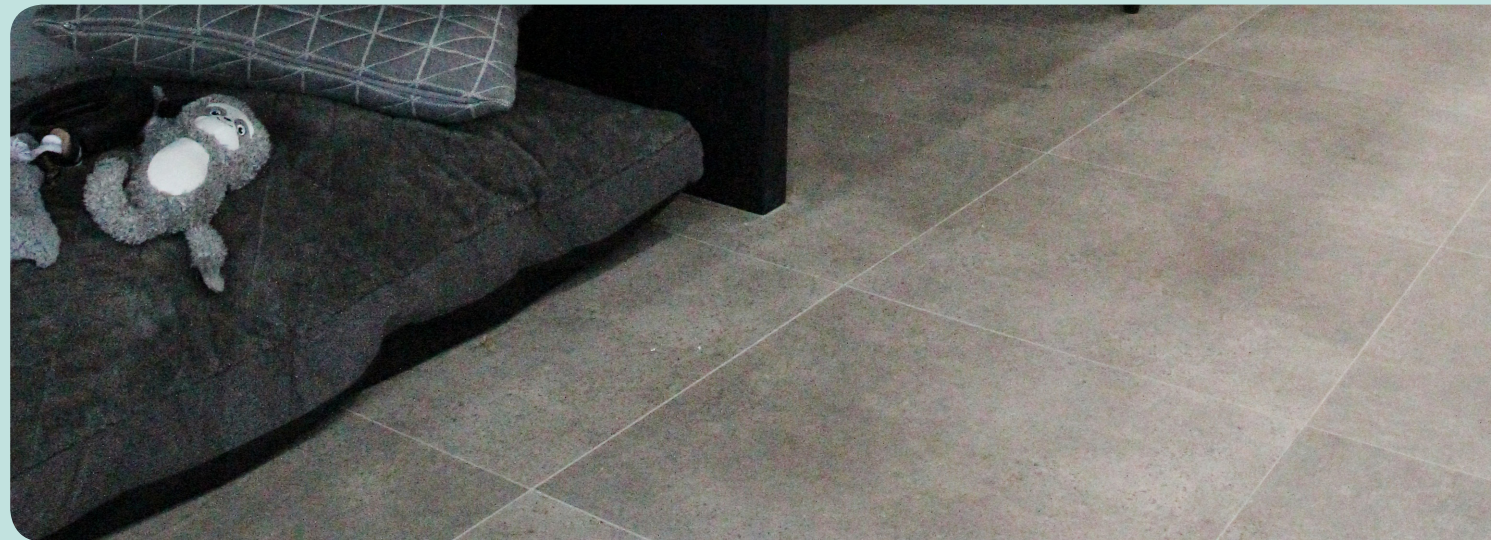
*900mm Canopy Rangehood*

*Summer  
Series*





*20mm Stone Benchtop to Kitchens from our Classic Range*



*600 x 600 Porcelain Floor Tiles to Common Ground Areas from our Classic Range*



*Dakin 12.5kW Inverter Air Conditioner to keep you cool*



*Dishwasher in Kitchen*



*10 LED Downlights in lieu of oyster lights*





Summer  
Series

# essential

Perfect for Everyone

1. 2600mm ceiling to ground floor.
2. 2kW Solar panel System
3. 900mm gas Westinghouse cooktop
4. 900mm Canopy Rangehood
5. 20mm Stone Benchtop to Kitchens from our Classic Range
6. 600 x 600 Porcelain Floor Tiles to Common Ground Areas from our Classic Range
7. Dakin 12.5kW Inverter Air Conditioner to keep you cool
8. Dishwasher in Kitchen
9. 10 LED Downlights in lieu of oyster lights



1300 855 138  
[www.meridianhomes.net.au](http://www.meridianhomes.net.au)

#### Terms and Conditions

- 20 only of each package available to the first buyers to pay a tender fee.
- Promotion period is from 7th December, 2019 to 28th February 2020 for new tender fees only
- Finishes 28th Feb 2020 (unless otherwise sold out prior)
- Customer must enter into a building contract by 15th March, 2020.
- Upgrade is applicable to the standard design layout only. Extensions or modifications to the layout may affect incur additional costs.
- Additional air-conditioning zones, extra outlets or larger kW will be charged and payable by the client.
- Cannot be used in conjunction with any other offer or promotion
- Not applicable to the SMART Series range of homes.
- Duplexes account for 2 promotions.
- Items cannot be substituted, removed from the package/s or exchanged for credit.
- Meridian Homes reserves the right to end or modify this promotion without notice or obligation.

Disclaimer: All images are used for Marketing purposes only and may not be indicative of final product. Please note the published price is based on the inclusions set out in the specifications attached to this Brochure. Speak to one of our consultants at the display home or call 1300 855 138 if the specification is missing or if you require further clarification. The price published includes the base façade. Full external site costs including leveling, soil removal, structural piling, drop edge beams, retaining walls etc and BASIX requirements will be quoted following an inspection of your proposed building site and are not included. Items excluded from the base price include, but are not limited to, landscaping, driveway, fences, swimming pool, floor coverings, timber decking, BBQ, air conditioning, blinds, curtains, window coverings, spa bath, water tanks, alarms, dishwasher, microwave, glass splashback, Statutory Authority requirements costs, stepped garages, subject to conditions on the 149 certificate and 88b instrument, furnishings, decorative items. Travel costs apply based on location of specific building lot. This promotion is not exchangeable, transferable or redeemable in cash. A credit will not be provided for any items in the promotion which are not accepted by the client. Deletions of any items from promotion will not be credited or discounted. Tender must be accepted within 10 days of presentation. Offer is correct as at 10th August 2019. Meridian Homes reserves the right to withdraw this offer at any time without notice or obligation. Builders License number 240445C.



# Summer Series



# essential