



SPECIFICATIONS | FLOOR AREAS

4  2.5  2 

House Width x Depth	8.87mx17.51m
Ground Floor	93.63m ²
First Floor	101.63m ²
Garage	34.28m ²
Porch	1.93m ²

Total House Size 231.47m²

Suitable for Min Lot Width 10m

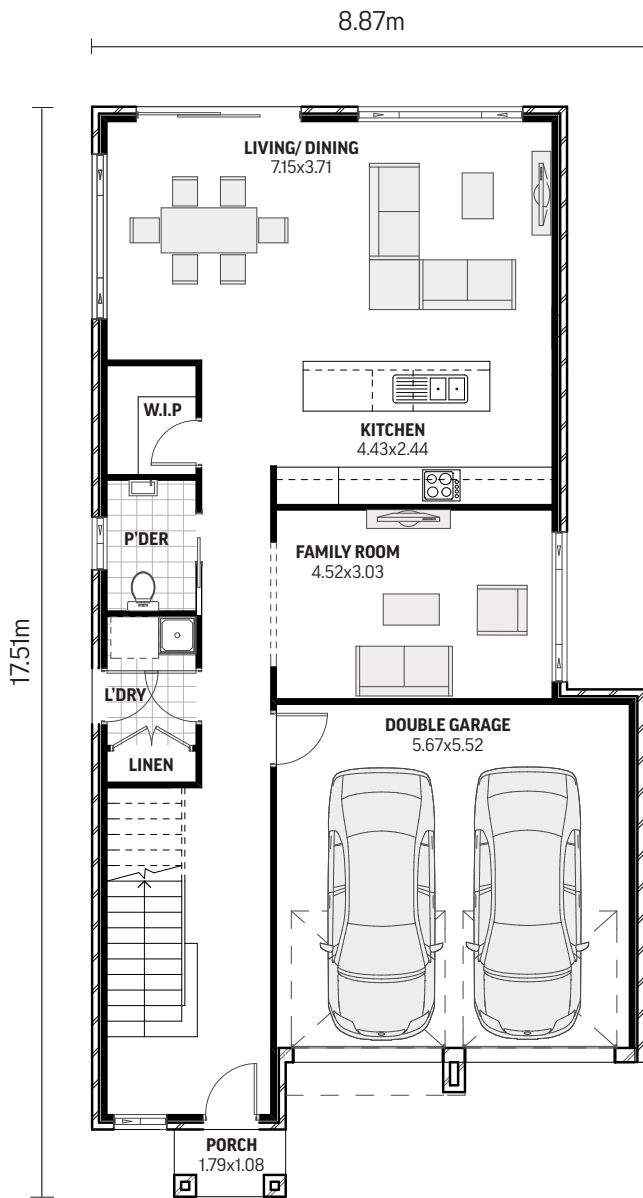
CAN BE CUSTOMISED TO SUIT YOUR NEEDS. TALK TO YOUR SALES CONSULTANT TODAY!



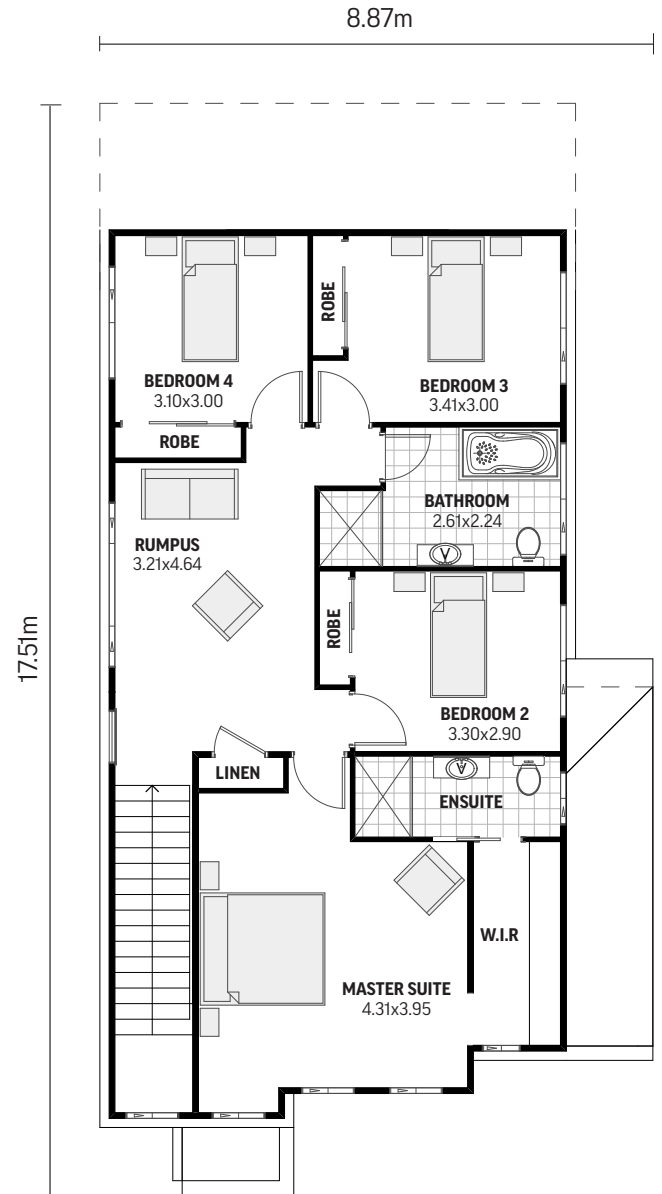


MERIDIAN HOMES

Montero 25



GROUND FLOOR



FIRST FLOOR

Your new home can be customised to suit your block & requirements and can feature these other facades



meridianhomes.com.au | 1300 855 138

MERIDIAN HOMES **DISPLAY CENTRES**

| HomeWorld Box Hill | HomeWorld Marsden Park
Coming soon: Menangle Park, Oran Park